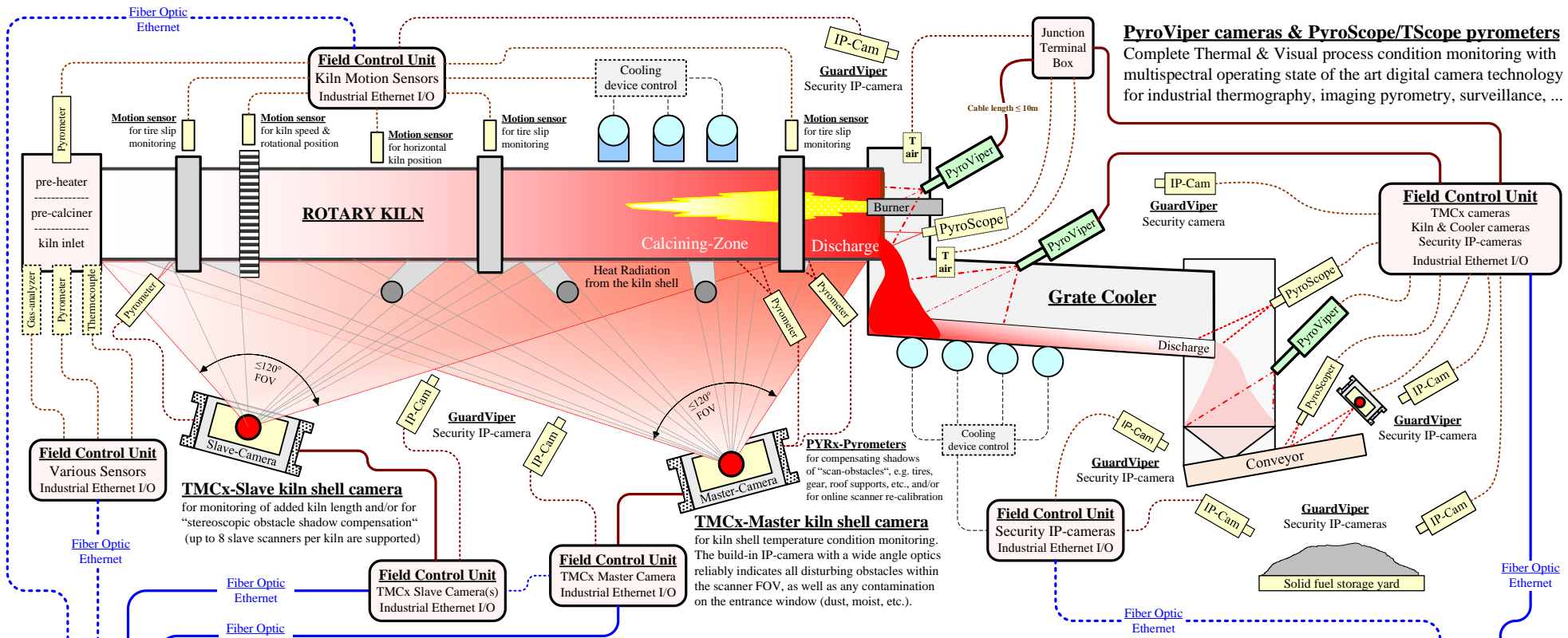


“PCMX-FaSu.NETx” system solutions for pyro-Process Condition Monitoring & embedded Factory Surveillance with advanced optronic instrumentation in an industrial IoT-NETwork

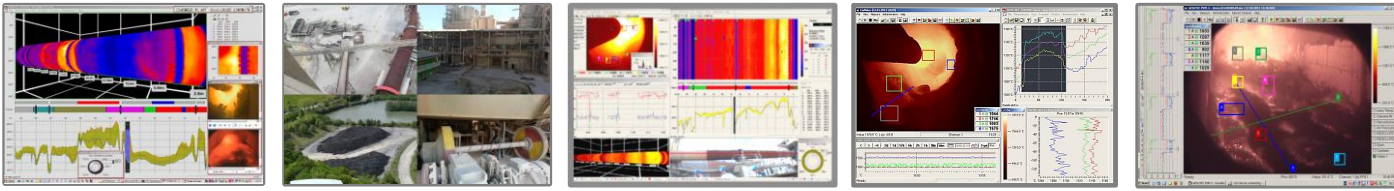


PyroViper cameras & PyroScope/TScope pyrometers
 Complete Thermal & Visual process condition monitoring with multispectral operating state of the art digital camera technology for industrial thermography, imaging pyrometry, surveillance, ...

TMCx-Slave kiln shell camera
 for monitoring of added kiln length and/or for "stereoscopic obstacle shadow compensation" (up to 8 slave scanners per kiln are supported)

TMCx-Master kiln shell camera
 for kiln shell temperature condition monitoring. The build-in IP-camera with a wide angle optics reliably indicates all disturbing obstacles within the scanner FOV, as well as any contamination on the entrance window (dust, moist, etc.).

Field / Outdoor Area
Control Room / IT Room / Electrical Service Room



I/O-Interface Unit
 Signal conditioning & pre-processing

Kiln Shell Console
 SCADA Host & HMI
 Signal/Data-Processor

Surveillance Console
 Security Video over IP
 Multi-screen Processor

Supervisor Console
 HMI/Integrated-System
 OPC data Client/Server

Burn-Zone Console
 SCADA Host & HMI
 Signal/Data-Processor

Clinker Cooler Console
 SCADA Host & HMI
 Signal/Data-Processor

I/O-Interface Unit
 Signal conditioning & pre-processing

—SCADA/Video Ethernet-LAN for thermal/visual pyro-Process Condition Monitoring & embedded Factory Surveillance / Advanced SCADA sub-system(s) in an industrial IoT-NETwork—

Data-link to the Field-, Control-, or Operations- Level of a Plant Automation System via industrial Ethernet communication

jh200507x: revised	PCMX-eFaS.NETx system concept M20V1R1 incl. conveyor TMCx camera	Dwg-Title: PCMX-FaSu.NETx system solutions for pyro-Process Condition Monitoring & embedded Factory Surveillance	Project Code, Plant Name, Location		
ah141128x: revised	KTCx.NET-SCADA system concept drawing, kiln & cooler layout 2014V1R3		Project-Manager: Gesotec/Client		
ah070917a: drawn/revised	KTCx.NET system concept drawing, kiln & cooler layout V2007R2	File-ID: PCMX-FaSu.NETx-system-solutions-M20V1R1(kiln-&cooler).jh240731x.vsd	Dwg-ID: PCMX-FaSu.NETx-system-layout-2016V2R1	Page #: 1	GESOTEC Industrial Technologies ©1982-2024 / www.gesotec.com
Initials/Date: Activity	Comments (All specifications are subject for changes without prior notice)			Pages: 1	